

# Samaritan Bethany

May 2024



Providing compassionate senior care and strengthening our community for over 100 years

## A message from the Co-Mission Leaders

May is full of vibrant spring energy here at Samaritan Bethany! We're celebrating National Homes for the Aging Week, honoring both our staff and residents from May 13th to 17th. This year, we're adding an exciting twist by embracing the theme of the Summer Olympics, promising a week filled with friendly neighborhood competitions as we strive for the gold!

But that's not all May has in store for us. As we gear up for our 17th Annual Golf Classic on June 17th, we're embarking on a month-long fundraising journey. Look out for tribute sign donation forms placed at each entrance to Samaritan Bethany. Every donation will be tracked on a meter, illustrating our progress towards our goal of acquiring a new wheelchair-accessible van for our residents.

We extend our heartfelt appreciation to all our sponsoring churches, donors, families, staff and residents whose unwavering support drives the mission of Samaritan Bethany forward.

Warm regards,  
Kyla and Rachael



### JOIN OUR TEAM

At Samaritan Bethany, our mission and values are inspired by the belief that we were sent to serve. Whether it's an entry level job to a leadership position, we value the contributions each individual brings.

- Caregiver
- Care Attendant
- Household Nurse (LPN)
- Care Coordinator (RN)

APPLY NOW 

Call 507-424-4047 or email [careers@samaritanbethany.com](mailto:careers@samaritanbethany.com)

**REGISTER NOW!**

17th Annual

# Samaritan Bethany Foundation

## GOLF CLASSIC

Monday, June 17, 2024

Somerby Golf Club



### Golfing for a Cause

Help us reach our goal to provide the residents with a new transportation option!



Wheelchair Accessible Ford Transit Van

### Tribute Signs: \$100

This opportunity provides a wonderful chance to pay tribute to a beloved individual, a group, or an organization. The tribute signs will be showcased near the entrance and the golfers' welcome area.

Signs are customizable to share a message of your choosing (up to 40 characters)

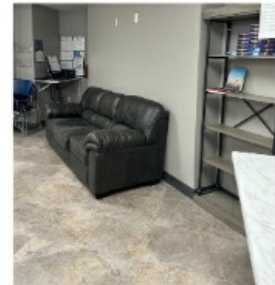
Example:  
In memory of John Doe  
lover of golf & had a  
swing like Tiger Woods

**Click here to donate!**  
Golfing for a cause & customize tribute sign

# New and Updated!

## EMPLOYEE BREAKROOM

Spring cleaning and face lift with new furniture, flooring, counter and TV for staff to relax comfortably!



# SNEAK PEEK



Coming in July 2024, Arbor Terrace will be expanding by adding a new assisted living neighborhood with 13 rooms!

These rooms will include the basic assisted living package and equipped with a hospital bed, over bed table, TV console with closet space, and a private bathroom.



**If you or someone you know is interested in moving in,  
get on the waitlist now!**

Please contact Rachael Maxfield  
507-424-5454

## Arbor Terrace



50 Independent Living with Services  
16 Assisted Living  
16 Memory Care (Assisted Living)

700 2nd Ave NW  
Rochester, MN 55901  
507-288-4883

## Home on Eighth



116 Long Term Care Beds  
12 Short Term Rehab Beds

24 8th St. NW  
Rochester, MN 55901  
507-289-4031

**Like and follow us on social media**



Samaritan Bethany Inc. | 24 8th St NW, Rochester, MN 55901

[Unsubscribe rhawkins@samaritanbethany.com](mailto:unsubscribe_rhawkins@samaritanbethany.com)

[Update Profile](#) | [Constant Contact Data Notice](#)

Sent by rhawkins@samaritanbethany.ccsend.com powered by



Try email marketing for free today!