

ARBOR TERRACE

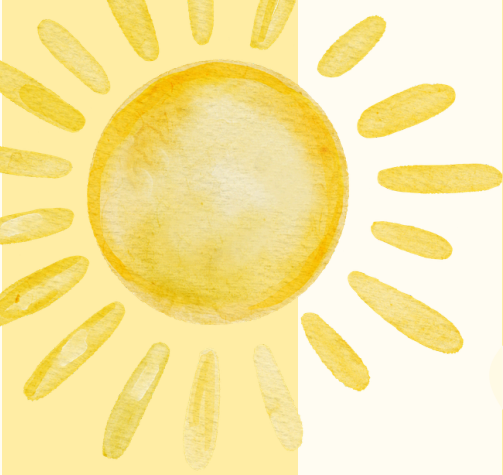


NEWSLETTER



JUNE

2026



- A Message from the - Housing Coordinator

IN THIS EDITION:

- **MESSAGE FROM GRACE**
- **ACTIVITY HIGHLIGHTS**
- **TRISHAW SEASON**
- **LIFE ENRICHMENT MENTOR WELCOME**
- **FATHER'S DAY MESSAGE**
- **CHAPLAIN'S MESSAGE**
- **HOMES FOR THE AGING WEEK RECAP**
- **MAY PICTURES**
- **GAMES & ACTIVITIES**



It finally feels like summer is here! The sunshine, warm weather, blooming flowers, and longer days have brought so much energy around Arbor Terrace lately, and it has been great seeing everyone spending more time outside and enjoying the season.

As I continue serving as Housing Coordinator during Rachael's maternity leave, I just want to thank everyone again for the warm welcome.

We had a wonderful time celebrating Homes for the Aging Week in May. Thank you to everyone who helped make the week so special for our residents and staff. It was a fun week filled with activities, treats, and lots of great memories.

One of our biggest events coming up this month is our Annual Golf Tournament Fundraiser on June 18th. All proceeds from the event go directly back to benefiting our residents through activities, events, and other meaningful additions throughout the year.

We are currently looking for more golf teams to join us on June 18th! If you, your family, friends, or workplace would be interested in putting together a team, we would love to have you involved. Please reach out for more information or check out our website for the registration link.

I hope everyone has a great June and gets the chance to enjoy some sunshine along the way!

Sincerely,
Grace Denstad

*Hello
Summer!*

JUNE

ACTIVITY HIGHLIGHTS

SUN

MON

TUES

WED

THURS

FRI

SAT

	1	2	3 <i>RESIDENT FORUM 2:30PM (IL)</i>	4	5	6
7	8	9 <i>LUNCH BUNCH: HUNAN BISTRO 11:00AM</i>	10 <i>WOMEN'S BREAKFAST 9:00AM (CHAPEL)</i>	11	12	13
14	15 <i>ICE CREAM SOCIAL 2:00PM (IL)</i>	16	17	18	19	20
21	22 <i>APRIL BIRTHDAY PARTY 2:00PM (IL)</i>	23 <i>BETHEL ICE CREAM SOCIAL 2:00PM (IL)</i>	24 <i>TEXAS HOLD 'EM 3:00PM (CHAPEL)</i>	25	26 <i>MEN'S BREAKFAST 9:00AM (CHAPEL)</i>	27
28	29	30 <i>COMO ZOO DAY OUTING DEPARTING @ 8:00AM</i>				

Note:

TRISHAW BIKE RIDES 1-2PM EVERY FRIDAY DURING JUNE!

TUESDAY, JUNE 30TH - COMO ZOO OUTING
DEPARTING @ 8:00AM

LIMITED SPOTS AVAILABLE – PLEASE SIGN UP WITH LIFE ENRICHMENT

TRISHAW SEASON



EVERY FRIDAY 1-2PM

DEPARTING FROM
ARBOR TERRACE
MAIN ENTRANCE

PLEASE WELCOME

SAMBATH VATH Life Enrichment Mentor



Hello everyone! My name is Sambath Vath, but I go by Sam. I am truly excited for this opportunity to become part of Samaritan Bethany's community as a Life Enrichment Mentor.

I was born and raised right here in Rochester, Minnesota. I have two daughters and I am a grandma to the sweetest 1 1/2-year-old Boy. In my free time I enjoy spending time outdoors, traveling with my family, cooking up new recipes and creating meaningful memories that will last a lifetime.

I would like to express gratitude to everyone I have already met for a wonderful first week here at Samaritan Bethany. I felt welcomed by both residents and staff. Everyone was very kind and supportive. I truly enjoyed meeting residents and staff and learning about the unique personalities that make Samaritan Bethany's community so special.

So, "Thank you!" for making my first week here such a positive and memorable one. I look forward to meeting everyone I have not already, and cannot wait to build meaningful relationships, create enjoyable experiences, share lots of laughter/smiles and become an active part of Samaritan Bethany's caring community.

Please feel free to say hello when you see me—I can't wait to meet and get to know each of you!



This Father's Day, we take a moment to celebrate and honor the incredible men who have shaped our lives with love, strength, and guidance.

At Arbor Terrace, we are especially grateful for the fathers, grandfathers, great-grandfathers, and father figures who make up our community.

Each of you carries a unique story filled with dedication, sacrifice, and moments that have left a lasting impact on your families and those around you.

We recognize and appreciate the encouragement, wisdom, and support you continue to provide to others every day.

Your presence enriches our community and reminds us of the importance of leadership, kindness, and connection.

To all of our residents, families, and team members who support the fathers in our lives, thank you for helping create a warm and caring home here at Arbor Terrace.

Wishing you a very happy and meaningful Father's Day.



June's Warmth and God's Love

As we welcome the beautiful month of June, we are reminded of the warmth that surrounds us in many ways. The sun shines a little brighter, flowers bloom in abundance, and the days invite us to slow down and enjoy the simple blessings of life. June carries a gentle reminder that warmth is not only something we feel from the weather, but it is something we can share with one another through kindness, compassion, and love.

In our community, warmth is found in the smiles exchanged in the hallway, the conversations shared over cookies after Chapel, and the caring hands that help one another each day. These moments may seem small, but they are reflections of something much greater: God's love at work among us.

Scripture reminds us in Psalm 136:1, "Give thanks to the Lord, for He is good. His love endures forever." God's love does not change with the seasons. It remains steady through every stage of life—through joy and sorrow, through strength and weakness, and through youth and aging. His love continues to shine upon us just as faithfully as the June sun rises each morning.

For many people, June may also stir memories of summers long ago: family gatherings, children playing outside, vacations, gardens, church picnics, and evenings spent watching the sunset. These cherished memories are gifts from God, reminders of lives well-lived and hearts deeply loved. Even as time moves forward, God continues to create new moments of peace, laughter, and connection for us today.

As your chaplain, I encourage each of us this month to share warmth wherever we can. A kind word, a listening ear, a prayer for a neighbor, or simply sitting with someone who feels lonely can become a powerful expression of God's love. We may never fully know how much comfort a small act of kindness can bring to another person.

May the presence of God's love and the sunshine of June bring a smile to your face and a warmth to your heart.

Chaplain Darin



HOMES FOR THE AGING WEEK

Recap



MONDAY: BARN & BOURBON



TUESDAY: PRETTY PASTELS



WEDNESDAY: DERBY BEST



THURSDAY: FANCY FLORALS



FRIDAY: FANTASY FRIDAY





CANVA STORIES
0228:20
CNVFM 200 PLUS
08



CANVA STORIES
0228:20
CNVFM 200 PLUS
08



CANVA STORIES
0228:20
CNVFM 200 PLUS
08



CANVA STORIES
0228:20
CNVFM 200 PLUS
08



CANVA STORIES
0228:20
CNVFM 200 PLUS
08



CANVA STORIES
0228:20
CNVFM 200 PLUS
08



MAY
MEMORIES

Father's Day Word Search



R M T H R S J O L E D O B T W
O E C P M Y U G O J M C N R C
L X S Z E C N X H Q A L K O Q
E R S I M T E E S T F I G P B
M G O I W X R L X Y S F D P V
O S H T F O O A E E V W X U B
D Y G P A R E N T B D K J S V
E H Q T E Y Z B B J R A F K T
L Z B H L N D C P G L A D K D
J W T I A C Y T L O V E T D J
R A M H B A Z L V B I J Z E Y
F A F R H N F A F V O Y I A Q
F I Q Q I H D E F E M U E W L
O D V M R W A I R H D U F A N
N E D F S B M N D F N L F T K

Father
Love
Celebrate
Role Model

Hero
Gifts
Wise
Support

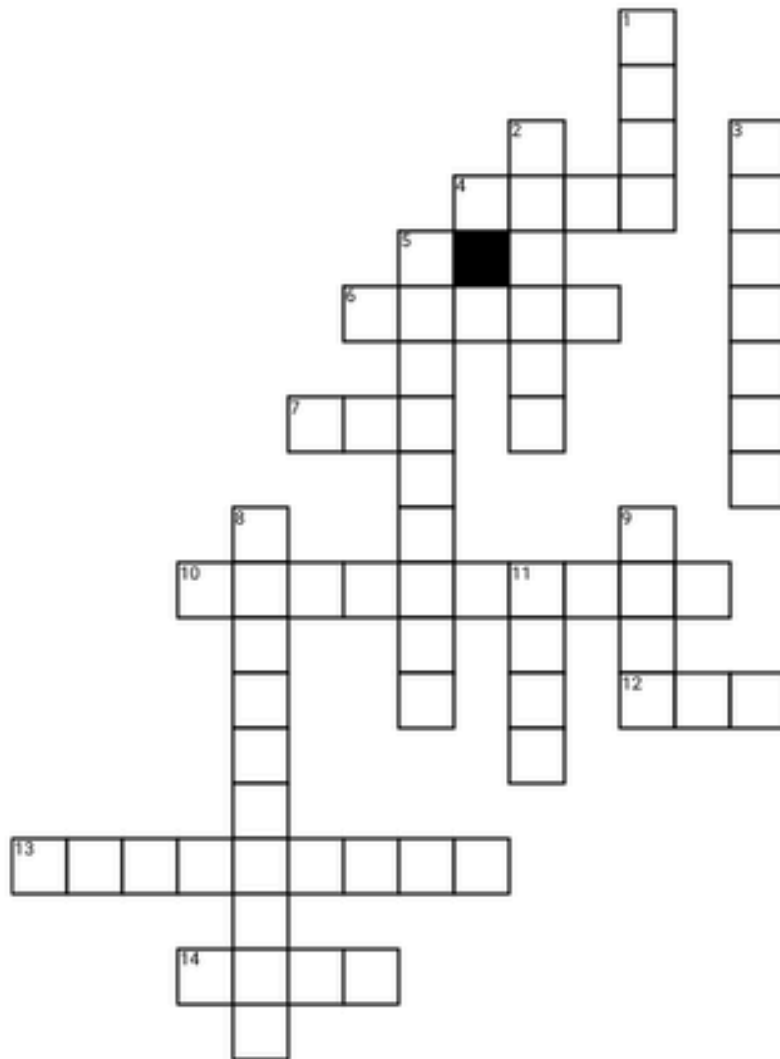
Family
Parent
Daddy
June

FATHER'S DAY

WORD SCRAMBLE

1. HERAFT _____
2. ADD _____
3. YIMFAL _____
4. FHIGNSI _____
5. TPEARNS _____
6. TSSPRO _____
7. LEOV _____
8. NSGORT _____
9. GINCRA _____
10. LOER EMLDO _____
11. HOYAILD _____
12. RHALGTUE _____
13. CTPORET _____
14. CLAIESP _____
15. YNUNF _____

Father's Day Crossword Puzzle



Across

- 4. Father's Day is celebrated in the U.S. in this month
- 6. Fathers are lovingly called this
- 7. To hold closely, especially in the arms as an affectionate embrace
- 10. It was first officially designated in a 1966 Lyndon Johnson proclamation

- 12. The committee who provided this crossword puzzle
- 13. The father of Greek tragic drama
- 14. A deep, ineffable feeling of affection and solicitude towards a person

Down

- 1. This flower is used to honor fathers on Father's Day

- 2. Father's Day is celebrated in the U.S. on this day of the week
- 3. To keep from being damaged or injured
- 5. Plural form of daughter
- 8. The status of a father
- 9. A flat, usually rectangular piece of stiff paper given to your Father on Father's Day is called this
- 11. Plural form of son