

ARBOR  
TERRACE  
*Newsletter*



MAY 2026



## *- A Message from the - Housing Coordinator*

What a change of seasons we have been having here in southern Minnesota! As the days grow warmer and everything begins to bloom, it feels like the perfect time for new beginnings here at Arbor Terrace.



### **IN THIS EDITION:**

- **MESSAGE FROM GRACE**
- **MAXFIELD BABY ANNOUNCEMENT**
- **ACTIVITY HIGHLIGHTS**
- **HOMES FOR THE AGING WEEK SCHEDULE**
- **MOTHER'S DAY MESSAGE**
- **REMINDERS!**
- **CHAPLAIN'S MESSAGE**
- **APRIL PICTURES**
- **GOLF CLASSIC**
- **GAMES & ACTIVITIES**

My name is Grace Denstad, and I will be serving as the Housing Coordinator while Rachael is away on maternity leave. Over the past year, I have had the opportunity to serve as the Administrative Intern at Samaritan Bethany, where I have gained valuable experience working alongside many wonderful leaders, staff, residents, and families. I will be graduating this month from the University of Wisconsin - Eau Claire, and I am truly grateful for the opportunity to step into this role as I begin my career after college.

I look forward to getting to know all of you and supporting our residents, families, and team during the next few months. It is an honor to be part of such a welcoming community.

We are also excited for Homes for the Aging Week coming up May 11th-15th. We have many fun activities planned throughout the week, and this year's theme is "Moments in Bloom." We look forward to celebrating together and making many special memories.

Wishing everyone a wonderful month ahead, and please feel free to stop by and say hello.

Sincerely,  
Grace Denstad





# It's a Boy!

Rachael & Andy welcomed their  
sweet baby boy on April 28<sup>th</sup>

5:32 am

8 lbs 3 oz

20 ½ inches long

# Grady Joel Maxfield



# May

## ACTIVITY HIGHLIGHTS

MON	TUE	WED	THU	FRI	SAT	SUN
					<b>1</b>	<b>2</b>
<b>3</b> 	<b>4</b> PAWS & CLAWS OUTING 1:30PM	<b>5</b> CINCO DE MAYO TREAT CART 12:30PM (DOOR TO DOOR)	<b>6</b> RESIDENT FORUM 2:30PM (IL)	<b>7</b> BANANA BREAD 10:00AM (AL)	<b>8</b> "MOM'S FAV MOMENTS" BREAKFAST 10:00AM (CHAPEL) 	<b>9</b>
<b>10</b> HAPPY Mother's DAY	<b>11</b>	<b>HOMES FOR THE AGING WEEK! MOMENTS IN BLOOM: KENTUCKY DERBY!</b>				<b>16</b> MUSIC: MARK CHRISTENSON 1:30PM (MC)
<b>17</b>	<b>18</b> MAY BIRTHDAY PARTY! 2:30PM (IL)	<b>19</b> WALKING CLUB BEGINS! 12:30PM (MEET @ FRONT DESK) 	<b>20</b>	<b>21</b> BERRY POKE CAKE 10:00AM (AL)	<b>22</b>	<b>23</b> 
<b>24</b>	<b>25</b> Lest We Forget. 	<b>26</b> 	<b>27</b> TEXAS HOLD 'EM 3:00PM (CHAPEL)	<b>28</b> STRAWBERRY LUSH 10:00AM (MC)	<b>29</b> MEN'S BREAKFAST 9:00AM (CHAPEL)	<b>30</b>

**Note:** HOMES FOR THE AGING WEEK IS CELEBRATED MAY 11TH-15TH  
JOIN US FOR A FUN-FILLED WEEK IN COLLABORATION  
WITH THE HOME ON 8<sup>TH</sup> RESIDENTS AND STAFF!

EVENTS LISTED ON SEPARATE PAGE

# Upcoming Events

Samaritan  Bethany

## HOMES FOR THE AGING WEEK

*Moments in Bloom: Kentucky Derby!*

### May 11<sup>th</sup> - 15<sup>th</sup>

**Monday**

#### ***Mane Event***

10:00am | Assisted Living  
Brims & Bowties: Derby decorating!

1:30-3:30pm | Parking Garage  
The Garden Gallop: Horse Races

**Tuesday**

#### ***Tasty Tuesday***

10:00am | Samaritan Bethany Livingroom/Pub  
Blooming Cupcake Bar

3-4:00pm | 8<sup>th</sup> Street Main Entrance  
Patty's Ice Cream Truck

**Wednesday**

#### ***Wisdom & Whimsy***

10:00am | Livingroom/Pub  
Give Us The Tea (Party): My Life in Bloom

2-4:00pm | Livingroom & Courtyard  
Garden Gathering: Flower Planting, Lemonade Stand, Outdoor Games & Live Music!

**Thursday**

#### ***Thankful Thursday***

10:00am | Chapel  
Kindness in Bloom: Care Kit Project

2:30-4:00pm | Samaritan Bethany Livingroom/Pub  
Happy Hour: Best in Bloom | Music: Hans Mayer

**Friday**


#### ***Fantasy Friday***

9:30am-12pm | Pick-up/Drop-Off Arbor Main Door  
"Carriage" Rides: Trishaw Season Kick-Off!

2:00pm | Departing from Home on 8<sup>th</sup>  
Main Entrance  
Pegasus Parade

*Look for flyers regarding dress up days!*





This Mother's Day, we take a moment to celebrate and honor the incredible women who have shaped our lives with love, strength, and wisdom.

At Arbor Terrace, we are especially grateful for the mothers, grandmothers, great-grandmothers, and mother figures who make up our community.

Each of you carries a unique story filled with care, sacrifice, and moments that have left a lasting impact on your families and those around you.

We recognize and appreciate the joy, guidance, and comfort you continue to bring to others every day.

Your presence enriches our community and reminds us of the importance of connection and compassion.

To all of our residents, families, and team members who support the mothers in our lives, thank you for helping create a warm and caring home here at Arbor Terrace. Wishing you a very happy and meaningful Mother's Day.

# REMINDERS!



**DON'T FORGET TO SIGN IN AND OUT WHEN LEAVING/RETURNING TO THE FACILITY!**

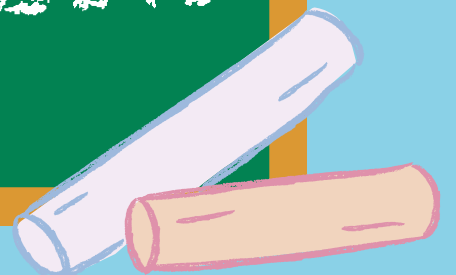
**IT'S GETTING NICE OUT! DON'T FORGET TO WEAR SUNSCREEN AND DRINK PLENTY OF WATER!**



**PLEASE MAKE SURE YOU ARE WEARING YOUR PENDANT AT ALL TIMES!**



**RACHAEL WILL BE GONE UNTIL AUGUST, REFER TO THE PREVIOUS NEWSLETTER FOR CONTACTS!**



# Springtime Grace

Dear Residents,

As we step into the month of May, we are greeted by one of the most beautiful reminders of God's goodness: spring in full bloom. After the quiet rest of winter, creation seems to awaken all at once—trees leafing out in fresh green, flowers opening toward the sun, and birds filling the air with song. There is something deeply healing about this season. It invites us to slow down, breathe a little deeper, and notice the beauty that surrounds us each day.

For many people, spring brings warm memories as well as present joys—gardens once tended, walks taken in a warm sunshine, and time spent with loved ones outdoors. Even if your pace has changed over the years, the gift of God's creation remains just as rich and available to all. A sunny morning through the window, watching the fresh green grass being mowed, or the sight of the new blooming flowers out in the courtyard.

The Psalms often remind us that creation itself is a testimony to God's care and majesty. Psalm 104 paints this picture beautifully: "How many are your works, Lord! In wisdom you made them all; the earth is full of your creatures... May the glory of the Lord endure forever; may the Lord rejoice in his works." (Psalm 104:24, 31)

As you move through this month, I encourage you to take small moments to notice God's "springtime grace" around you. Whether it's a warm breeze, a patch of sunlight, or simply time spent with a friend. These are the gifts that speak of God's love presence among us.

Grace and peace to you this May.

**Chaplain Olson**





# April Photo Dump

# Samaritan Bethany

19TH ANNUAL

# GOLF

## CLASSIC

THURSDAY, JUNE 18TH 2026

GET  
REGISTERED  
TODAY!

### SCHEDULE

- 9:30am** Driving Range Open
- 10:30am** Registration
- 11:00am** Lunch
- 11:50am** Welcome & Instructions
- 12:00pm** Shotgun Start
- 5:00pm** Dinner & Awards

### GOLFING FOR A CAUSE!

Your participation in our Annual Golf Classic provides us with the resources to keep up our efforts in improving the lives of the residents who live at Samaritan Bethany!

Join us for a day of golf and fun out supporting the seniors of our community.

### EVENT DETAILS

Register now through  
June 10th, 2026

**Entry Fees:** Foursome - \$700  
Single Golfer - \$175  
SB Staff Golfer - \$90  
Dinner Ticket - \$50

**Fee Includes:** 18 Hole Round of  
Golf with Cart  
Lunch and Dinner



SCAN ME

OR

Register Online At:  
[samaritanbethany.com](http://samaritanbethany.com)





# MAY

## Word Search

K P N Q P C D H M Z N E M X J  
 L H M A Q I G I S O L G O X K  
 A D L E B N S M C R D R T P G  
 D F M V M C Q P M E Q J H L J  
 Y Q A N T O M M R Z O B E A D  
 B U Y R J D R A R I T B R N G  
 U V A Y G E B I Y S N Y S T A  
 G V C N M M G U A D H G D S R  
 G Q Z Q A A X I T L A T A S D  
 X K Q E Q Y Y G X T D Y Y N E  
 H M I F L O W E R S E A R W N  
 G B E F J F E W C F M R Y Z K  
 W W L I L G R A S S T K F F J  
 H H U F K Z L I O E Z G T L F  
 F U D F N I I U U M V Z H V Y

- May
- May Day
- Mother's Day
- Flowers
- Spring
- Cinco de Mayo
- Garden
- Memorial Day
- Butterfly
- Ladybug
- Plants
- Grass



Name: \_\_\_\_\_ Date: \_\_\_\_\_



## Word Scramble

In the Northern Hemisphere, May is a month when flowers bloom, the weather gets warmer, and school starts to wind down for the summer. Can you figure out the seasonal vocabulary words by unscrambling the letters?

EENRG \_\_\_\_\_

GHITL \_\_\_\_\_

LLAIC \_\_\_\_\_

ASRSG \_\_\_\_\_

BTRUTELYF \_\_\_\_\_

OBLMO \_\_\_\_\_

SDSEE \_\_\_\_\_

AOEMYLP \_\_\_\_\_

ICPINC \_\_\_\_\_

RESO \_\_\_\_\_

SRDIB \_\_\_\_\_

IHSNNSUE \_\_\_\_\_

ATRSUU \_\_\_\_\_

LOFREW \_\_\_\_\_

OMSSLOB \_\_\_\_\_

LDABGUY \_\_\_\_\_

PATLN \_\_\_\_\_

MBULEEBBE \_\_\_\_\_

EGADNR \_\_\_\_\_

ISNRGP \_\_\_\_\_

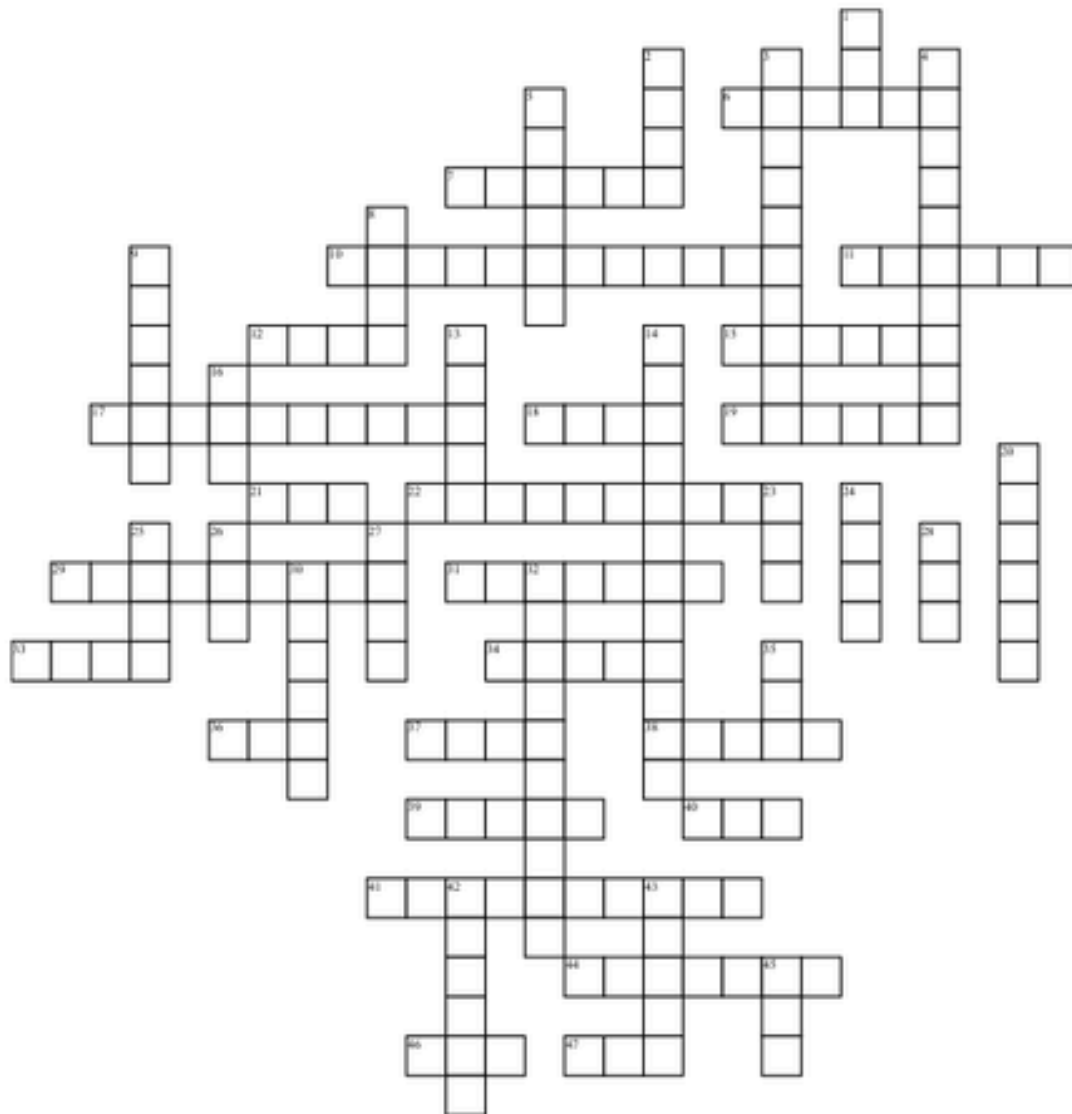
OERTHM \_\_\_\_\_

AHTWMR \_\_\_\_\_

PUITL \_\_\_\_\_

AELBALBS \_\_\_\_\_

# May Crossword Puzzle



**Across**

- 6. Crispy Triangle
- 7. Dogs follow them
- 10. Bolo ties or bell bottoms
- 11. Raccoon kin
- 12. Arcing recess
- 15. Duplicates
- 17. They're hidden annually
- 18. Laker great, familiarly
- 19. Kind of a baseball league for pre-Little Leaguers
- 21. One of two possible Passover mos
- 22. They take forever
- 29. what you might get on a day off
- 31. Franklin spelled it out
- 33. Building blocks for tots
- 34. Former Fox News anchor Van Susteren

- 36. "It's Raining \_\_\_\_" The Weather Girls hit
- 37. Zero-star fare
- 38. Indignant reply
- 39. Begin to fast
- 40. Glutton
- 41. Target
- 44. Read carefully
- 46. Charge
- 47. Got into a pickle

**Down**

- 1. Media co. based in D.C. and Fla.
- 2. They may be blonde or red
- 3. Not go off script
- 4. "Quit it with the attitude"
- 5. Carbohic Acid
- 8. Best Actress between Jennifer and Julianne
- 9. "Camptown Races" refrain syllables

- 13. Start over
- 14. Ruled by thieves
- 16. Grisham hero, often: Abbr
- 20. Brick partner
- 23. \_\_\_\_punk: No Doubt genre
- 24. Like some restaurant boxes
- 25. Hold up
- 26. Kinda equivalent
- 27. Throw below deck, say
- 28. One using bugs
- 30. Graduates
- 32. Where thoughts can be organized
- 35. Xi preceders
- 42. Lost control in a big way
- 43. Sip
- 45. University Dept.