

## Isolation Gown Sewing Instructions

**Please see Page 2 for Sizing Modifications**

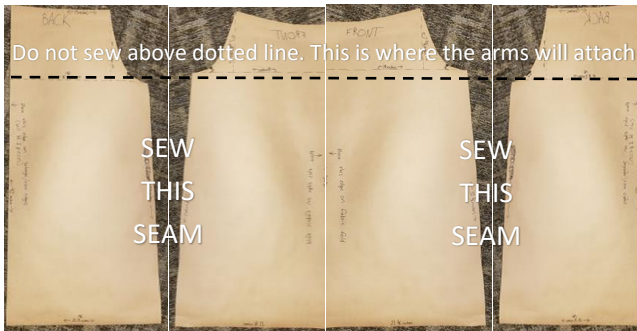
These instructions are suggestions based on manufacturer-made cloth isolation gowns.  
Please sew with durability in mind for multiple washings. Thank you!

### Materials

- 48 inches of bias tape for the neck seam and ties (use one piece)
- 2 pieces of 12 inches bias tape or twill tape for the back ties (1 for each side)
- 2 pieces of 8.5 inches elastic for wrists
- For all garment pieces, you will need 1 section of fabric that is roughly 3 yards and 4 inches long by 44 inches wide.
  - Manufacturer-made gowns are made with cotton/polyester fabric
- See Page 2 for pattern/measurement recommendations. These patterns will result in the 5 pieces of fabric.
  - 1 'front' section of fabric
  - 2 'back' sections of fabric
  - 2 'arm' sections of fabric

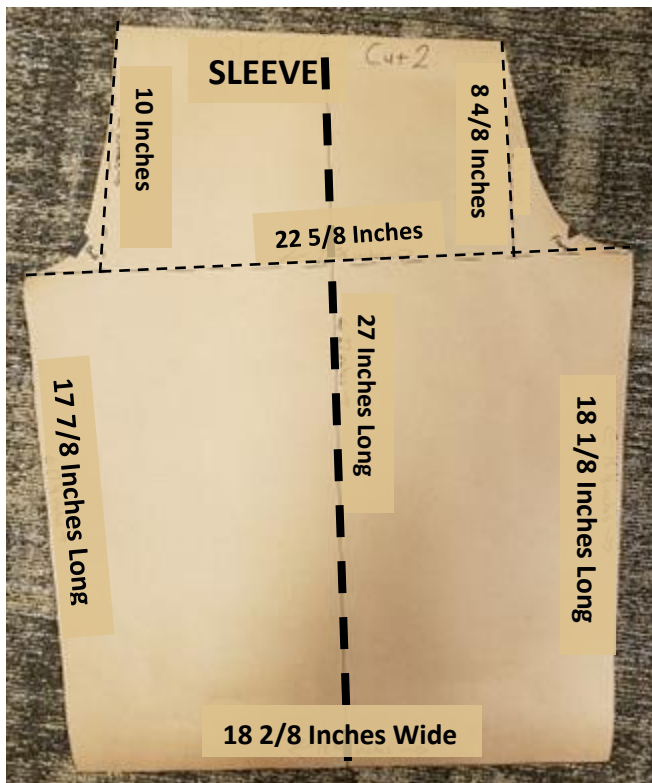
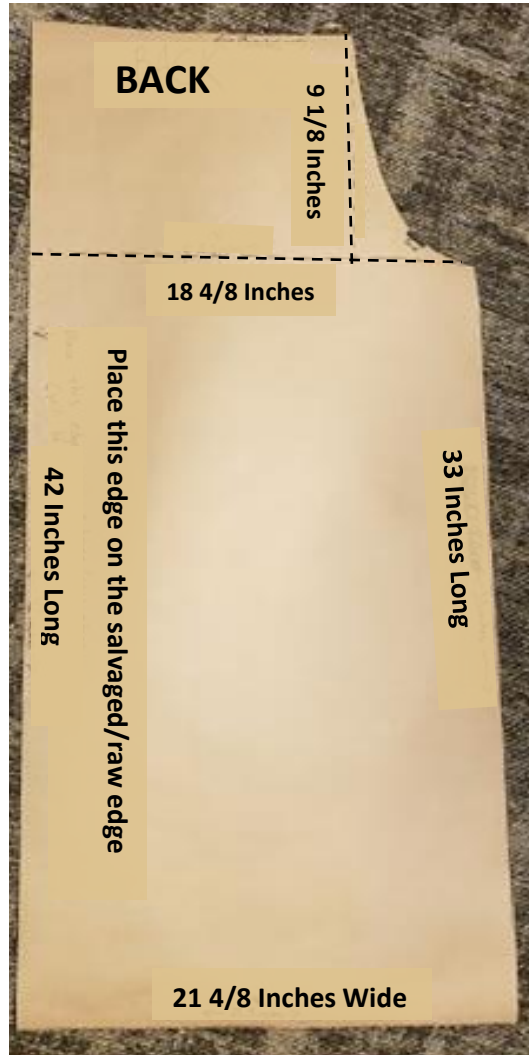
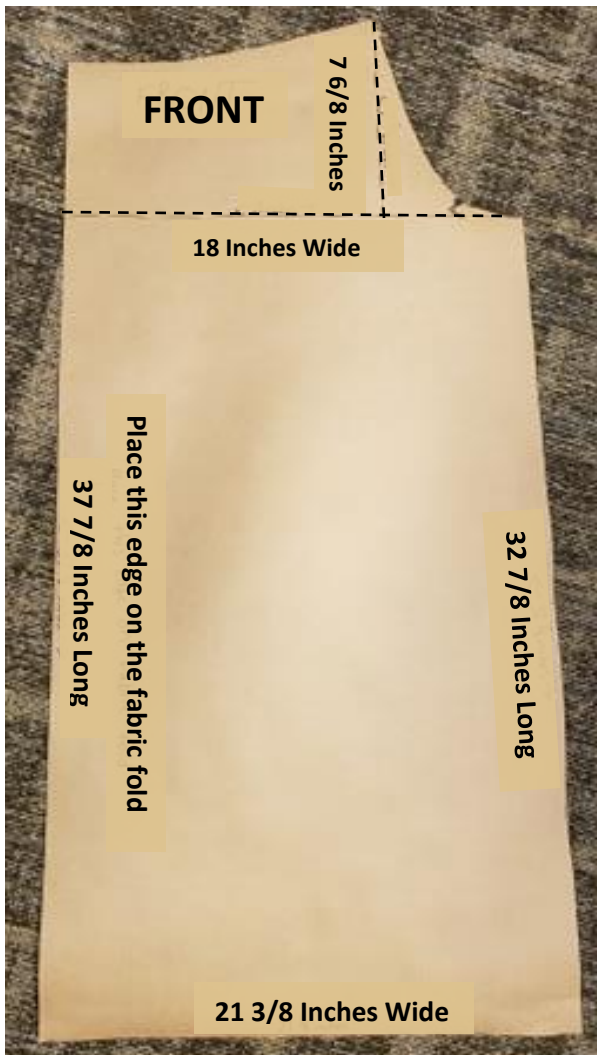
### Sewing Instructions

1. Stitch 2 'back' sections of fabric to the 'front' section on the side seams. See images below for guidance.



2. Stitch the seams of each 'arm' section of fabric.
3. Make casing hem at end. Insert and sew together elastic in each casing hem at the wrist.
4. Attach each 'arm' to the body of the garment.
5. Gather neck edge to fit into bias tape (48 inch piece of bias tape). Make sure you have equal amount of bias tape hanging off of fabric. These are the neck ties. (See picture to the right)
6. Finish bias tape/twill tape for back ties. Each side should have 1 tie (12 inch of bias tape/twill tape) on each side. These are the waist ties. (See picture to the right)
7. Hem any raw seams on the garment.





**Sizing Modifications**

We have found that these measurements and instructions make a small/medium sized gown due to the arm and shoulder fit. For a large gown that will fit a wider range of people, please consider the following additional instructions:

- Make sure the elastic for the cuffs is narrow to not take up much arm length
- Add roughly 5 inches to each arm length
- Add several inches of bias tape at the neck
- Be careful not to gather the fabric too much when sewing the seam