

~ A Message from the ~ Housing Community Leader



Greetings Everyone,

Fall is upon us with the leaves changing and the crisp air each morning. I love this time of year when we can switch to hot apple cider, big warm sweaters, and spooky Halloween movies.

We have had an eventful month of September with the recent changes around Arbor Terrace. We have the Essential Caregiver Program in full swing. It has been going great with only a few hiccups along the way. The software has had some glitches so if any of you notice an issue please feel free to call for clarification. Another recent improvement is the Independent Dining Room. We have all new flooring, paint and chairs. We are ready for the residents to come back with some new guidelines regarding the social distancing and how to reserve a table. Please see page 4 for more info on the dining room re-opening.

Another event I would love to highlight is the resident OTEGO exercise program led by Shane Hoffman, Life Enrichment Coordinator. The residents are gaining knowledge and strength in mobility to prevent falls. We are seeing a great attendance record in all three neighborhoods. I would encourage your loved ones to attend that way they stay engaged and active while we transition to the colder months.

Sincerely,

Rachael Paddock, LNHA

Housing Community Leader
rpaddock@samaritanbethany.com



COVID-19 UPDATE

COVID TESTING

On September 10th and 11th Arbor Terrace Staff underwent COVID-19 mass testing. On September 13th I was happy to announce that all staff came back **NEGATIVE!**

This is a big accomplishment and we are taking every measure to keep your loved ones safe during this crazy time. Please still be cautious with the flu season approaching to make sure we wash hands, wear masks, stay home if feeling ill, and to social distance when needing to be out.

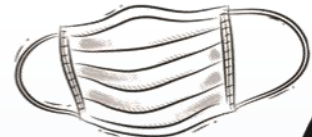
We have recently sent the flu shot consent forms to families for residents. Please return those at your earliest convenience. We are hoping to get the flu shot in and administered to all residents by mid to late October.



of Positive Cases at Arbor Terrace

# of Staff	3
# of Residents	0

COVID-19 continues to spread in the community and we are taking every precaution recommended by MDH and the CDC. Please remember to be cautious of where you travel to and always perform hand hygiene! We also ask that you wear a mask at all times when in proximity to others.



“Mask Up”!
KEEP THE RISK DOWN

Communication is key. We will continue to update you on any news, emerging issues, or additional changes in our operations via phone, email, or mail. We also have a new link on <https://www.samaritanbethany.com/> Home Page for COVID updates, just click the yellow **Learn More** button. If you have issues or concerns, please let us know or you can also call the Office of Ombudsman for Long-Term Care at 800-657-3591.

GRAND RE-OPENING

ARBOR TERRACE DINING



We will be opening up the dining room on Monday October 5th, 2020. We will be serving all 3 meals in the dining room starting this day. The seating will be one person per table and everyone must face the same direction. The kitchen staff will escort and assign residents to a table when they arrive for each meal.

Breakfast

- This meal will be first come first serve.
- Serving will begin at 7am and go till 9am.
- At 8:30am we will start room delivery for anyone who has not come down for Breakfast.

For Lunch and Dinner they will have to sign up at reception on a clip board for the next day's meals by 4pm. This is to reserve a time slot in the dining room NOT to fill out the menu. Our menus will still be delivered a week in advance on Friday's and need to be returned by Sunday's to know the count for that week.

Lunch

- This meal will have 2 or 3 time slots depending on the number signed up for lunch.
- There will be 11:30am, 12pm, and 12:30pm time slots.
- If they sign up for a meal but do not reserve a dining time we will automatically deliver your meal.
- Room trays will be delivered starting at 12:30pm

Dinner

- This meal will have 2 time slots for Dinner.
- There will be 4:45pm and 5:15pm time slots.
- If they sign up for a meal but do not reserve a dining time we will automatically deliver your meal.
- Room trays will be delivered starting at 5:30pm

How to Become an

Essential Caregiver



If you want to be an Essential Caregiver (EC) at Arbor Terrace for a resident we need you to submit an application. When we receive your application our team will review the request and approve or deny based on the criteria.

Please make sure you read the agreement on the link below so you understand the expectations and know what our guidelines are.

Go to this web link to submit your application:

<https://ccs-signup.na.rapidbiz.com/>

Enter Facility Pin – 497154

If you are approved you will receive an email which contains a 4 digit pin number and a new link that will allow you to reserve a time slot.



We also have the option to download the IOS or Android app called Congregate Care Scheduling. It is free and all you have to do is download then enter the facility pin 497154.

FLU SEASON

- ⇒ Flu season runs approximately from October to May.
- ⇒ We are getting flu shots in for all staff and residents, we are administering shots mid to late of October depending on the arrival of the vaccine.
- ⇒ Consent forms were sent to families please return to Arbor Terrace at your earliest convenience!
- ⇒ If a resident gets a flu shot elsewhere in the community we need a copy of the documentation.
- ⇒ Please continue to monitor where you travel and wear the appropriate PPE, Flu travels like wildfire and we want to keep all our residents safe during this season.
- ⇒ **WASH YOUR HANDS and USE SANITIZER!**



A Senior Care Community